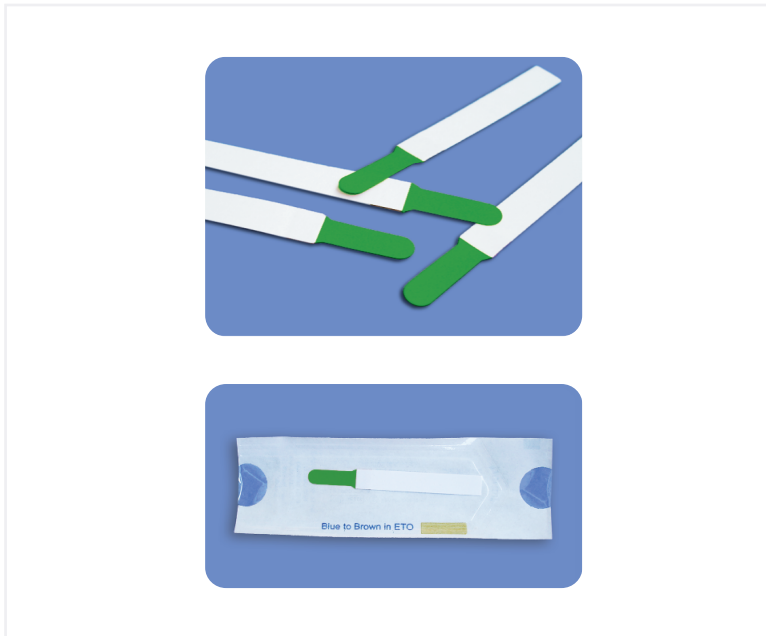




## Green Touch ( Lissamine Green Strips )

These strips work by staining the cornea blue upon instillation. This causes “speckling” of the cornea, which gives the user immediate indication of any dry patches, as well as any muco-deficient or damaged corneal cells.



### Product Description

Product Code	Description	Qty. per box
MIPL/A3	Lissamine Green Strips	100 strips (Sterile)

### Indications

- Used to stain preferentially damaged or devitalized cells
- To indicate any dry patches, as well as any mucus-deficient or damaged corneal epithelial cells

### Specifications

- It does not stain healthy, proliferating ocular surface cells and has a minimal effect on cell viability
- It does not sting the eye like Rose Bengal, and a white light or blue light can be used on the slit lamp during detection
- Available as sterile strips in individual pouches
- Each strip is impregnated with 1.50 mg of Lissamine Green
- Innovative peel open packing with transparent film on one side

## Instructions for Use

The instructions for use and surgical technique are supplied in the form of a leaflet with instructions given in diagram form where appropriate . The international symbols used on the packaging are also explained.

## Sterilization

Products are sterilized through Ethylene Oxide (EO) according to a validated cycle.



**MADHU INSTRUMENTS PVT LTD**

A-260, Okhla Industrial Area, Phase - 1, New Delhi - 110020, India

T: (+91-11) 4270 1030, 31 | E: sales@madhuinstruments.com | www.madhuinstruments.com

Customer Care No. +91 9810866176 (for international queries), +91 7428186111 (for domestic queries)