

Micro Incision Blade (Ultra Sharp)

Use of a chemical etching process (electropolishing) represents an innovative approach to the cutting edge finishing. The blade edge has been perfected at a micro level to provide an ultra sharp, consistent and precise cutting surface. This helps to eliminate the dragging & resistance feel of traditionally grinded blades and provides an effortless tissue penetration with a superior wound architecture.



“Extraordinary blades for an extraordinary surgical experience”

Product Description

MVR Blade

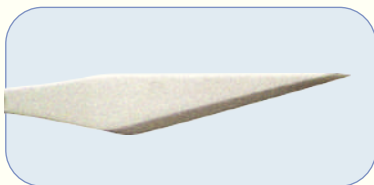
MVR blades are used for making side port in small incision cataract surgery and for making precise water tight port in vitreoretinal surgery.



Product Code	Description	Qty. per box
MIPL/C3/MVR/20G	20G Straight	10 pcs. (Sterile)
MIPL/C3/MVR/20G-A	20G Angled	10 pcs. (Sterile)

Lance Tip Blade

Lance Tip (Sideport) blades are designed for making corneal/limbal incision. They are found to be very suitable for making side port.



Product Code	Description	Qty. per box
MIPL/C3/LANCE/15°	15 Degree	10 Pcs. (Sterile)
MIPL/C3/LANCE/30°	30 Degree	10 Pcs. (Sterile)
MIPL/C3/LANCE/45°	45 Degree	10 Pcs. (Sterile)

Crescent Blade

Crescent blades are designed for making scleral tunnel (pocket or groove).



Product Code	Description	Qty. per box
MIPL/C3/CRESCENT/2.0-A	2.00 mm Angled	10 Pcs. (Sterile)
MIPL/C3/CRESCENT/2.2-A	2.20 mm Angled	10 Pcs. (Sterile)
MIPL/C3/CRESCENT/2.5-A	2.50 mm Angled	10 Pcs. (Sterile)

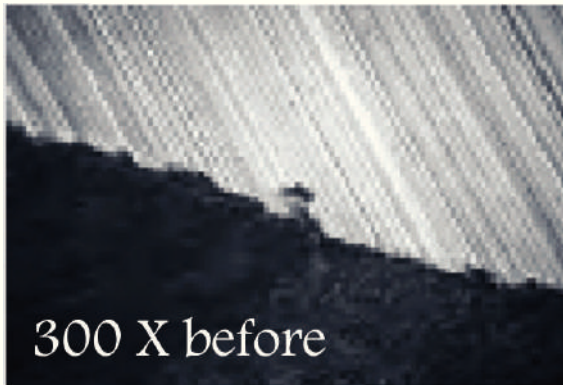
Slit Blade

Slit Blades (Keratomes) are designed to precisely give incision of required width for insertion of phaco tip, irrigation/aspiration tip.

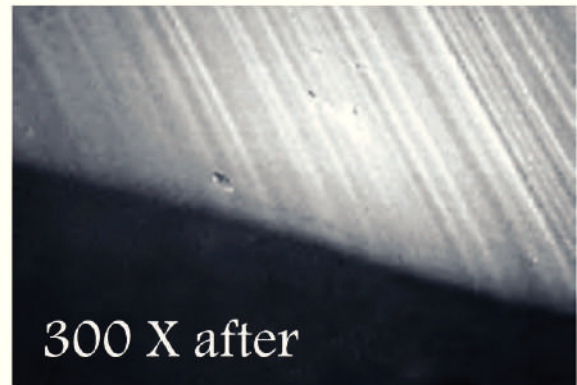


Product Code	Description	Qty. per box
MIPL/C3/SLIT/2.2-A	2.20 mm	10 Pcs. (Sterile)
MIPL/C3/SLIT/2.4-A	2.40 mm	10 Pcs. (Sterile)
MIPL/C3/SLIT/2.75-A	2.75 mm	10 Pcs. (Sterile)
MIPL/C3/SLIT/2.80-A	2.80 mm	10 Pcs. (Sterile)
MIPL/C3/SLIT/3.2-A	3.20 mm	10 Pcs. (Sterile)

Advantage of Electropolishing



Knife cutting edge before



Knife cutting edge after

Features

- Ultra Sharp cutting edge.
- Dimensionally precise & consistent.
- Unique “Chemical Etching Process” (Electropolishing).
- Polycarbonate handle & tray.
- CE certified.

Advantages

- Effortless tissue penetration.
- Minimal drag.
- Superior wound architecture.
- Matt finish blades eliminates reflective glare.
- Smooth uniform incisions.

Instructions for Use

The instructions for use and surgical technique are supplied in the form of a leaflet with instructions given in diagram form where appropriate. The international symbols used on the packaging are also explained.

Sterilization

Products are sterilized through Ethylene Oxide (EO) according to a validated cycle.



MADHU INSTRUMENTS PVT LTD

A-260, Okhla Industrial Area, Phase - 1, New Delhi - 110020, India

T: (+91-11) 4270 1030, 31 | E: sales@madhuinstruments.com | www.madhuinstruments.com

Customer Care No. +91 9810866176 (for international queries), +91 7428186111 (for domestic queries)

Ref. No.: MIPL/Pub/SPB/C3/02, Issue No.: 01, Issue Date: 01.03.2022, Rev. No. 04, Rev. Date: 26.09.2023